

Test Report



Report No. A220015853910102

Page 1 of 6

Applicant GradConn Ltd

Address 209 Minsheng Road, Longtan District, Taoyuan City, Taiwan 32554

The following sample(s) and sample information was/were submitted and identified by/on the behalf of the client

Sample Name Please see the pages 2

Type Please see the pages 2

Sample Received Date May 29, 2020

Testing Period May 29, 2020-Jun. 4, 2020

Test Requested

No.	Test Item
1	IP6X

Test Result(s): Please see the following pages.

Approved by

Roger Xiao

Date

Jun. 4, 2020

Roger xiao
Approved Signatory

No. RBD2797936

Centre Testing International Group Co., Ltd.

Hongwei Industrial Zone, Bao'an 70 District, Shenzhen, Guangdong, China



Test Report

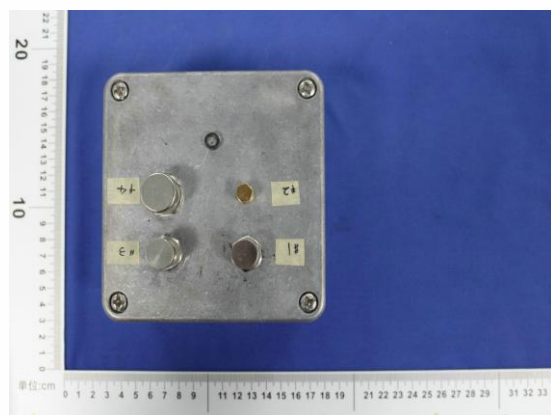
Report No. A220015853910102

Page 2 of 6

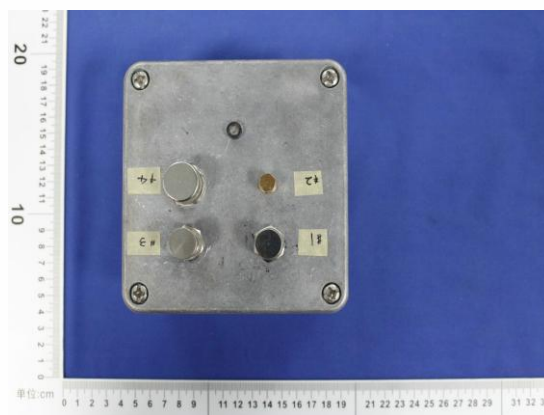
Tested Sample(s)

Sample No.	Sample Name	Type	Quantity
A2200158539101001	Metal protective cap with gasket for TNC Jack	RFCT-TNC-CAP-GS-3	1pc
A2200158539101002	Metal protective cap with gasket for SMA Jack	RFCT-SMA-CAP-GS-1	1pc
A2200158539101003	Metal protective cap with gasket for BNC Jack	RFCT-BNC-CAP-GS-3	1pc
A2200158539101004	Metal protective cap with gasket for N Jack	RFCT-N-CAP-GS-2	1pc

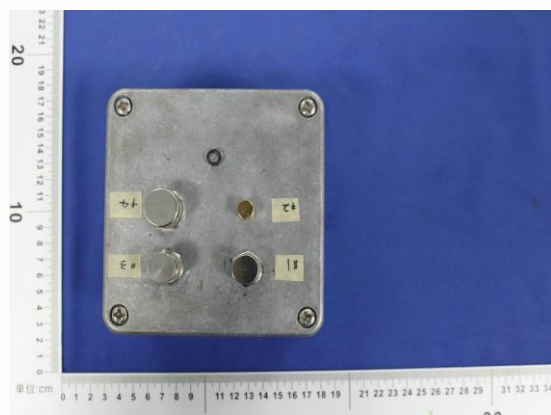
Sample Photo(s)



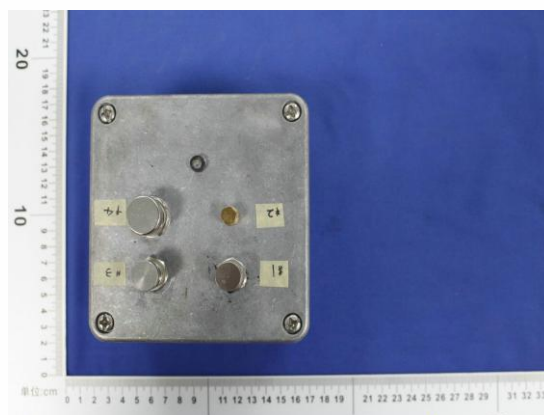
A2200158539101001



A2200158539101002



A2200158539101003



A2200158539101004

Test Report

Report No. A220015853910102

Page 3 of 6

Test Item: IP6X

1. Test Equipment

Equipment Name	Model
Test probe	Φ1.0mm
Dust Tester	KXT1410

2. Environmental Conditions

Temperature: 24.8°C; Humidity: 56%RH

3. Test Standard: IEC 60529:2013

4. Test Condition

Use a test probe with a diameter of 1mm to apply a force of 1N to probe the gap of the sample

Put the sample in a negative pressure state, the pumping rate is 40-60 times the volume of the shell per hour, the pressure difference between the pressure in the shell and the atmospheric pressure is less than 2kPa, and the continuous test in the dustproof test box is 2h.

Test Report

Report No. A220015853910102

Page 4 of 6

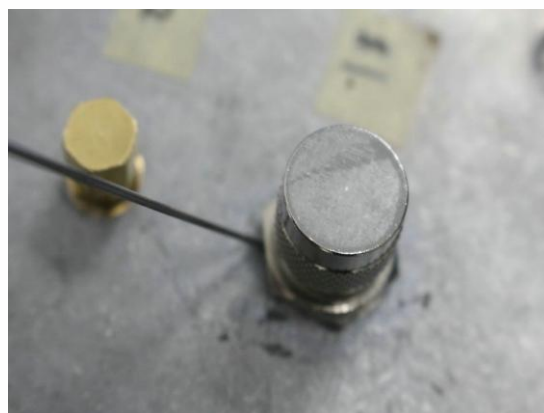
5. Test Result(s)

Sample No.	Criterion	Test result(Visual inspection)	Conclusion
A2200158539101001	The probe cannot enter the interior of the sample, and no dust enters the interior of the sample.	The probe cannot enter the interior of the sample, and no dust enters the interior of the sample.	Pass
A2200158539101002	The probe cannot enter the interior of the sample, and no dust enters the interior of the sample.	The probe cannot enter the interior of the sample, and no dust enters the interior of the sample.	Pass
A2200158539101003	The probe cannot enter the interior of the sample, and no dust enters the interior of the sample.	The probe cannot enter the interior of the sample, and no dust enters the interior of the sample.	Pass
A2200158539101004	The probe cannot enter the interior of the sample, and no dust enters the interior of the sample.	The probe cannot enter the interior of the sample, and no dust enters the interior of the sample.	Pass

Test Photo(s)



A2200158539101001



A2200158539101001

Test Report

Report No. A220015853910102

Page 5 of 6



A2200158539101002



A2200158539101002



A2200158539101003



A2200158539101003



A2200158539101004



A2200158539101004

GROUP CO., LTD.

Test Report

Report No. A220015853910102

Page 6 of 6

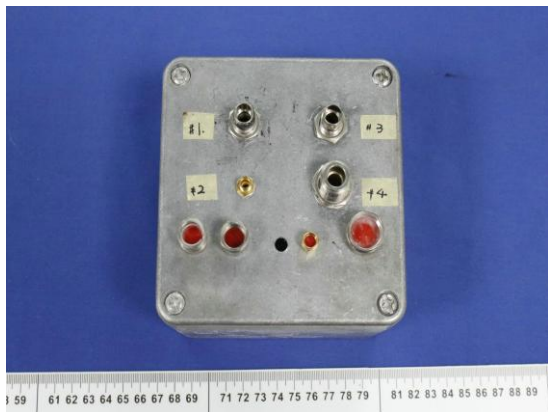
Sample Photo(s) after the test



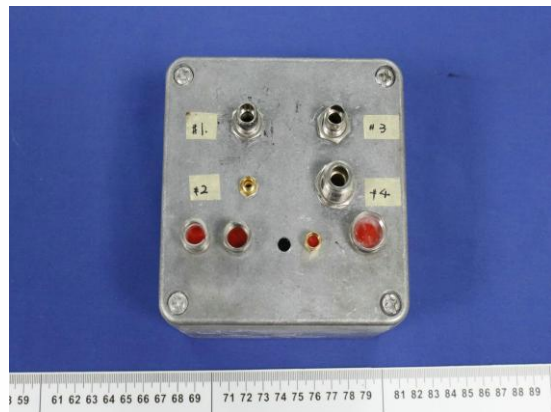
A2200158539101001



A2200158539101002



A2200158539101003



A2200158539101004

Remark: The testing data and result(s) in this report is(are) just for scientific research, education, internal quality control and product development etc.

*** End of Report ***

Statement:

- 1.This report is considered invalid without approved signature, special seal and the seal on the perforation;
- 2.The sample(s) and sample information was/were provided by the client who should be responsible for the authenticity which CTI hasn't verified;
- 3.The result(s) shown in this report refer(s) only to the sample(s) tested;
- 4.Without written approval of CTI, this report can't be reproduced except in full;
- 5.In case of any discrepancy between the English version and Chinese version of the testing reports(if generated), the Chinese version shall prevail.